

News Release

FOR IMMEDIATE RELEASE

NEC Networks & System Integration Corporation to Revise its Business Segments

Tokyo, July 23, 2010 -NEC Networks & System Integration Corporation (NEC NW&SI; TSE: 1973) announced the revision of its business segments, based on a new organization geared towards strengthening customer-oriented service businesses in compliance with its management approach.

Please refer to the following information:

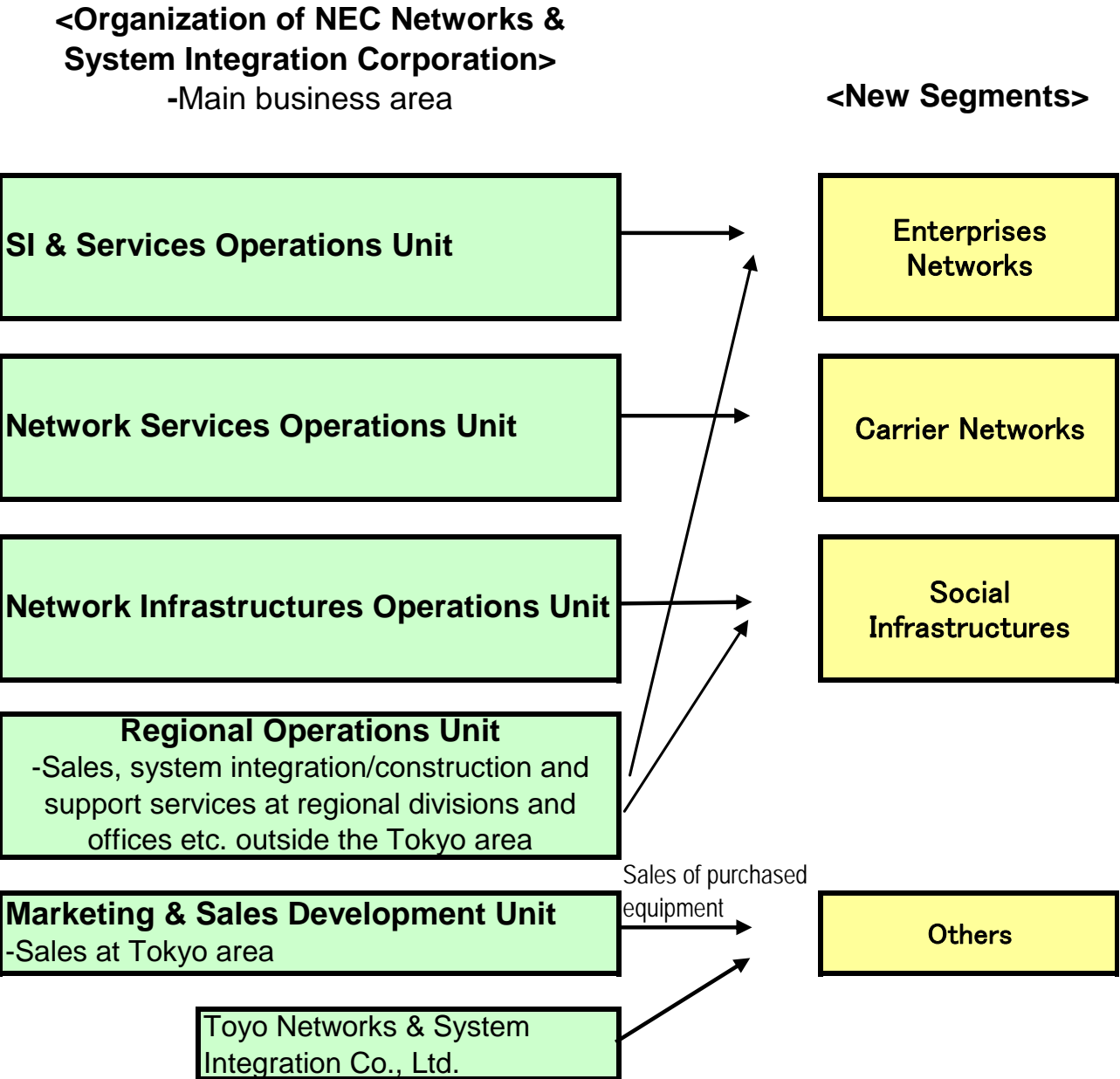
1. Outline of New Business Segments

Business Segments	Main Contents
Enterprises Networks	Service integration of ICT solutions, mainly for the enterprises market Total office solutions based on ICT with securities or environmental solutions and related operations, monitoring, and outsourcing services, as well as cloud-type solutions using our own data centers
Carrier Networks	Service integration of ICT platforms mainly for telecom carriers Systems integration of large-scale, wide-area, carrier-grade ICT platforms and related operations, monitoring services
Social Infrastructures	Service integration of ICT infrastructure for governments and public utilities (broadcasters, electric power companies, etc.), such as systems integration, operation, and monitoring, and the construction of telecom infrastructure
Others	Toyo Networks & System Integration Co., Ltd. and sales of purchased equipment

(Reference) Previous Business Segments

Business Segments	Main Contents
Network Integration /Support Services (NI/SS)	Planning and consulting, software development, construction, operation and maintenance, outsourcing services and supply of originally developed products and devices for network systems to strengthen the operating efficiency and competitiveness of customers
Telecommunications Engineering (TE)	Network infrastructure construction and installation of electrical and air conditioning systems
Product Sales (PS)	Sales of data communication products, etc.

2. Correlation Chart of New Segments and Organization Structure of NEC Networks & System Integration Corporation



3. Net Sales/Operating Income & Loss by New Segment

(1) Net Sales

(Billion yen)		Fiscal Year ended 2009/3 (Actual)		Fiscal Year ended 2010/3 (Actual)		Fiscal Year ending 2011/3 (Forecast)	
		1H	Full year	1H	Full year	1H	Full year
Enterprises Networks		42.6	90.2	36.2 (-15%)	76.1 (-16%)	37.5 (+4%)	84.5 (+11%)
Carrier Networks		26.2	52.9	22.1 (-16%)	44.9 (-15%)	19.5 (-12%)	45.5 (+1%)
Social Infrastructure		38.8	90.3	33.8 (-13%)	82.5 (-9%)	36.0 (+7%)	95.0 (+15%)
Others		7.5	15.7	7.2 (-5%)	14.1 (-10%)	7.0 (-2%)	15.0 (+6%)
Total		115.1	249.1	99.2 (-14%)	217.7 (-13%)	100.0 (+1%)	240.0 (+10%)

(2) Operating Income & Loss

(Billion yen)		Fiscal Year ended 2009/3 (Actual)		Fiscal Year ended 2010/3 (Actual)		Fiscal Year ending 2011/3 (Forecast)	
		1H	Full year	1H	Full year	1H	Full year
Enterprises Networks		3.3 (7.7%)	8.0 (8.8%)	3.0 (8.3%)	7.4 (9.8%)	3.0 (8.0%)	8.0 (9.5%)
Carrier Networks		2.6 (10.1%)	4.8 (9.0%)	1.9 (8.4%)	3.9 (8.8%)	1.5 (7.7%)	4.0 (8.8%)
Social Infrastructure		1.1 (2.9%)	3.9 (4.3%)	1.1 (3.2%)	4.0 (4.8%)	1.5 (4.2%)	3.5 (3.7%)
Others		0.1	0.6	0.3	0.6	0.3	0.5
Eliminations and Corporate		-3.0	-6.2	-3.0	-6.1	-3.0	-6.0
Total		4.1 (3.6%)	11.0 (4.4%)	3.2 (3.3%)	9.9 (4.5%)	3.3 (3.3%)	10.0 (4.2%)

<Reference> Net Sales/Operating Income & Loss by Old Segment

(3) Net Sales

(Billion yen)		Fiscal Year ended 2009/3 (Actual)		Fiscal Year ended 2010/3 (Actual)		Fiscal Year ending 2011/3 (Forecast)	
		1H	Full year	1H	Full year	1H	Full year
NI/SS		77.3 (+2%)	165.0 (+1%)	69.0 (-11%)	145.6 (-12%)	70.0 (+1%)	162.0 (+11%)
TE		29.5 (-4%)	68.4 (-3%)	25.3 (-14%)	60.8 (-11%)	27.0 (+7%)	68.0 (+12%)
PS		8.3 (-23%)	15.7 (-36%)	5.0 (-41%)	11.2 (-28%)	3.0 (-39%)	10.0 (-11%)
Total		115.1 (-2%)	249.1 (-4%)	99.2 (-14%)	217.7 (-13%)	100.0 (+1%)	240.0 (+10%)

(4) Operating Income & Loss

(Billion yen)		Fiscal Year ended 2009/3 (Actual)		Fiscal Year ended 2010/3 (Actual)		Fiscal Year ending 2011/3 (Forecast)	
		1H	Full year	1H	Full year	1H	Full year
NI/SS		5.4	13.0	4.7	12.2		
TE		1.2	3.2	1.1	2.7		
PS		0.2	0.6	0.3	0.6		
Eliminations and Corporate		-2.8	-5.8	-2.8	-5.6		
Total		4.1	11.0	3.2	9.9	3.3	10.0

- ※ The actual figures for new segments for the years ended 2009/3 and 2010/3 are reclassified for comparison in connection with the change of reporting segments and have not been audited.
- ※ Forecasts as of July 23, 2010 have not changed from the original forecasts as of May 12, 2010.
- ※ Figures are rounded and may not tally exactly with the totals.